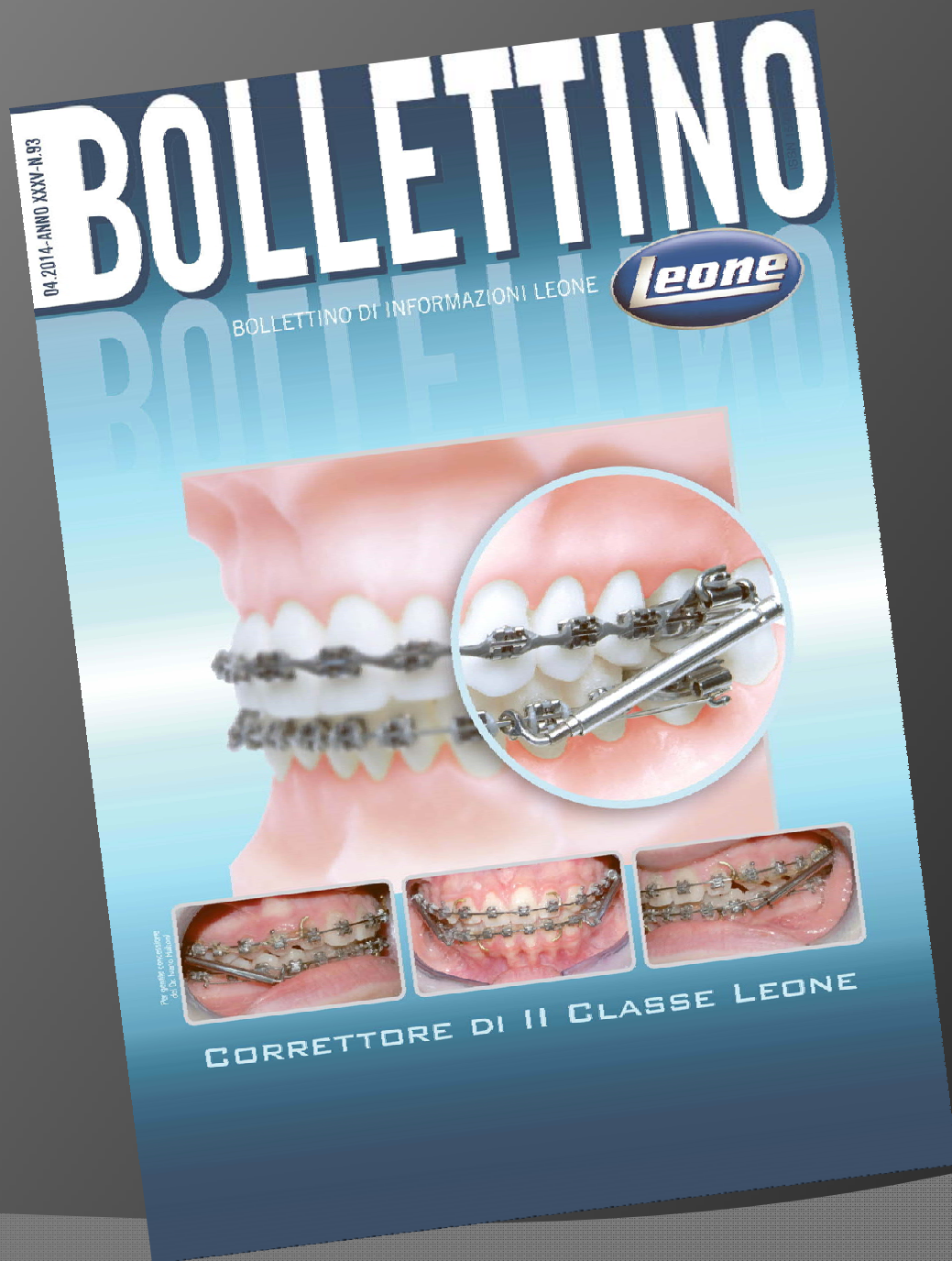


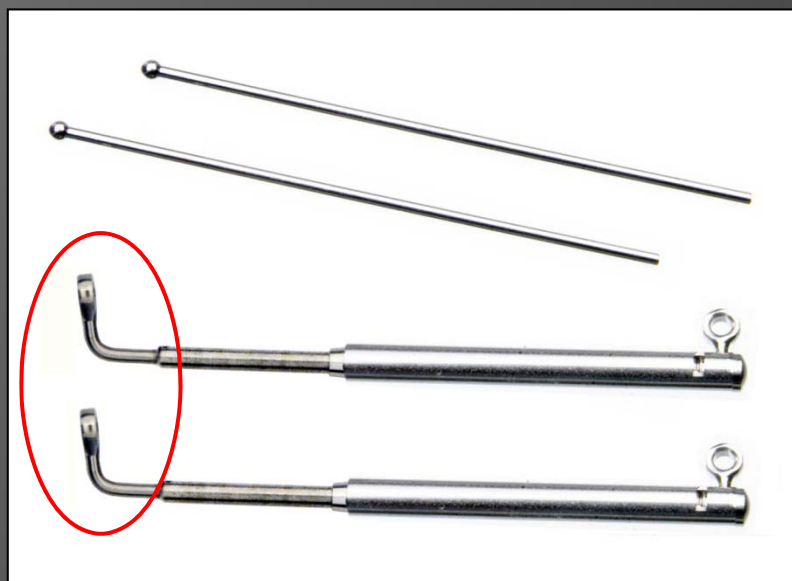


Ortodonzia e Implantologia



# II CLASS corrector ***GOto1***

According to the space available  
select among extra short, short  
and long.



Insert the lower arch 0.019 "x0.025" in the eyelets  
of both spring loaded cylinders



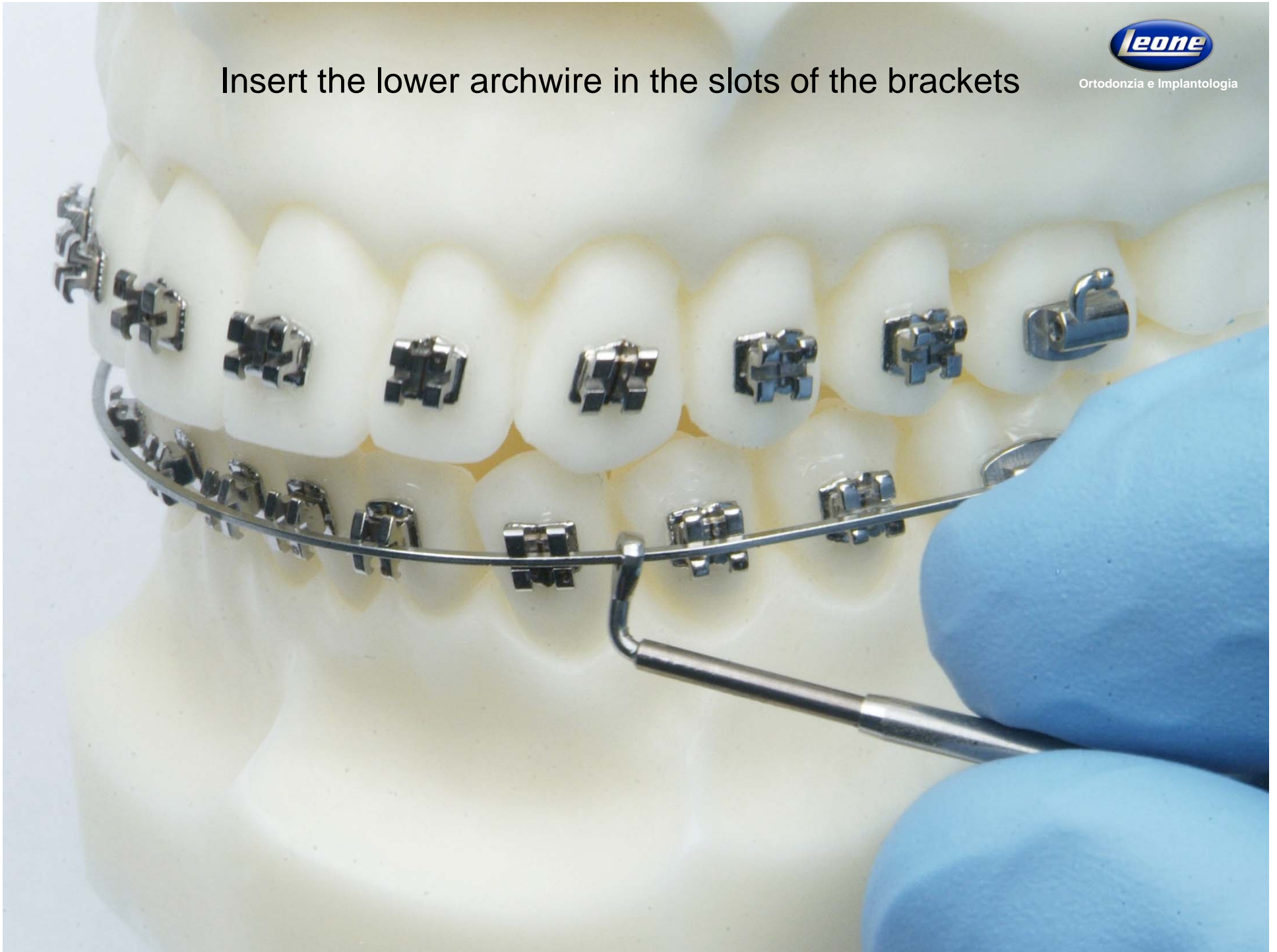
Ortodonzia e Implantologia



Insert the lower archwire in the slots of the brackets



Ortodonzia e Implantologia



Ligate the lower archwire to the brackets



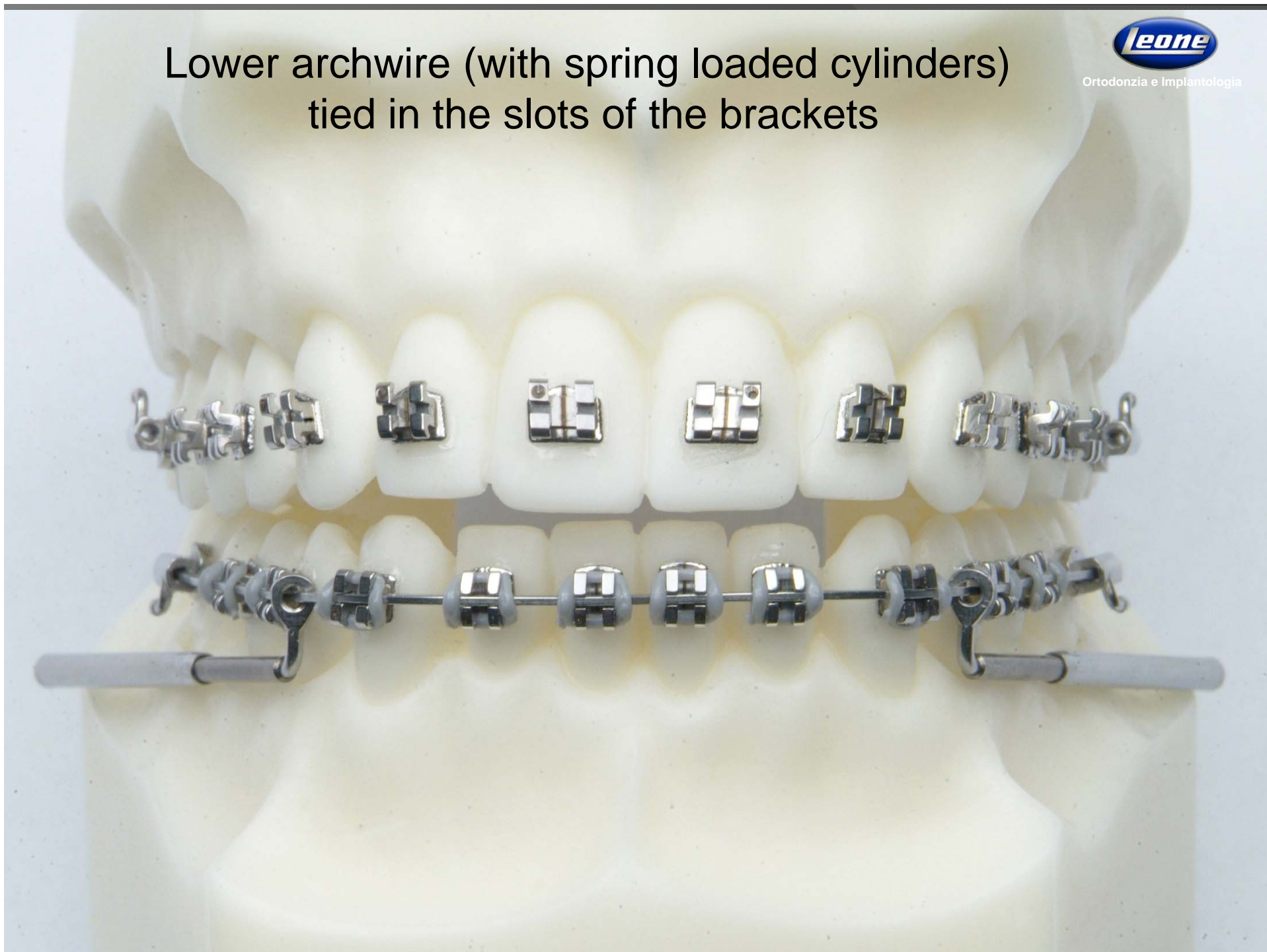
Ortodonzia e Implantologia



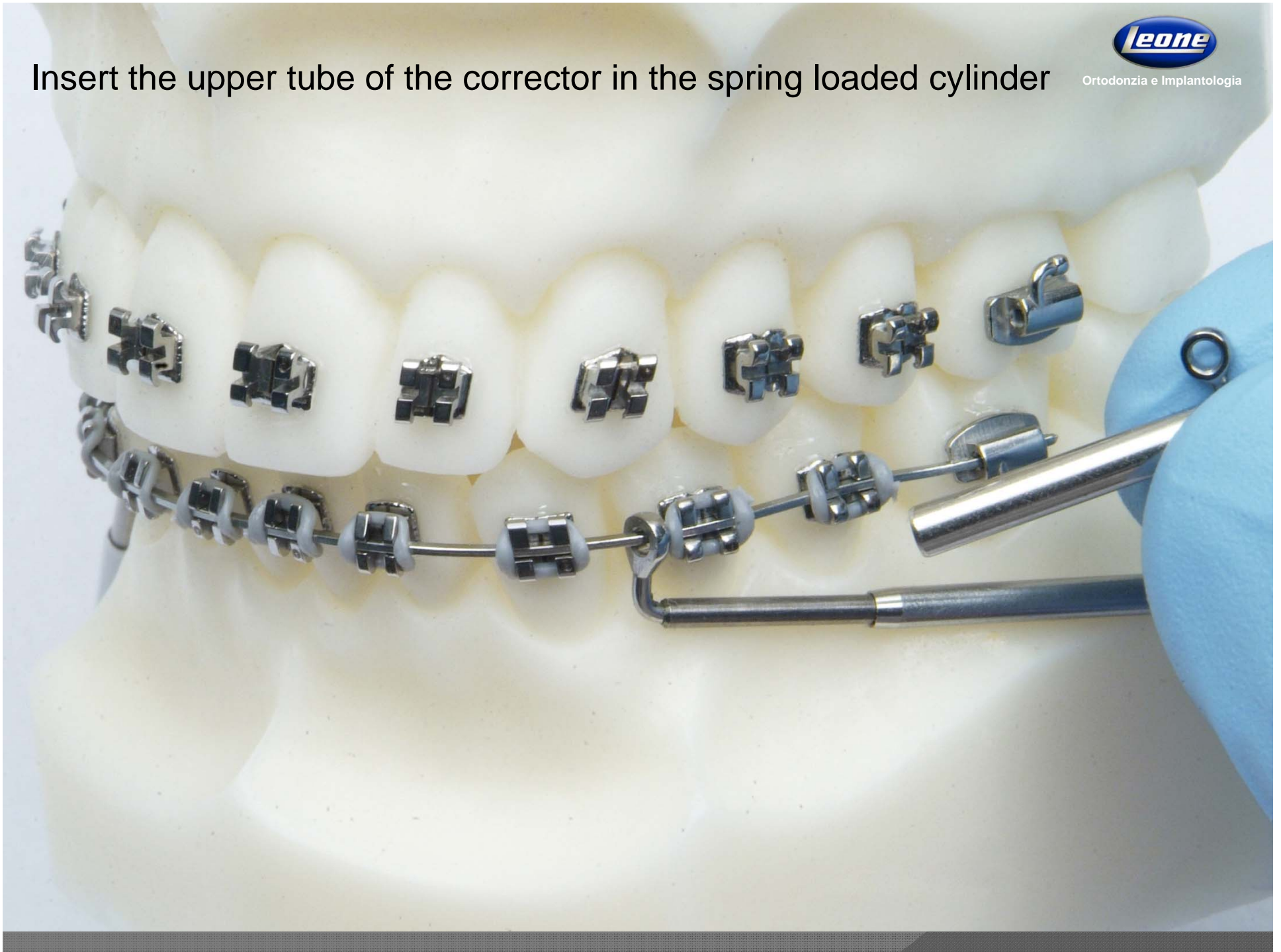
Lower archwire (with spring loaded cylinders)  
tied in the slots of the brackets



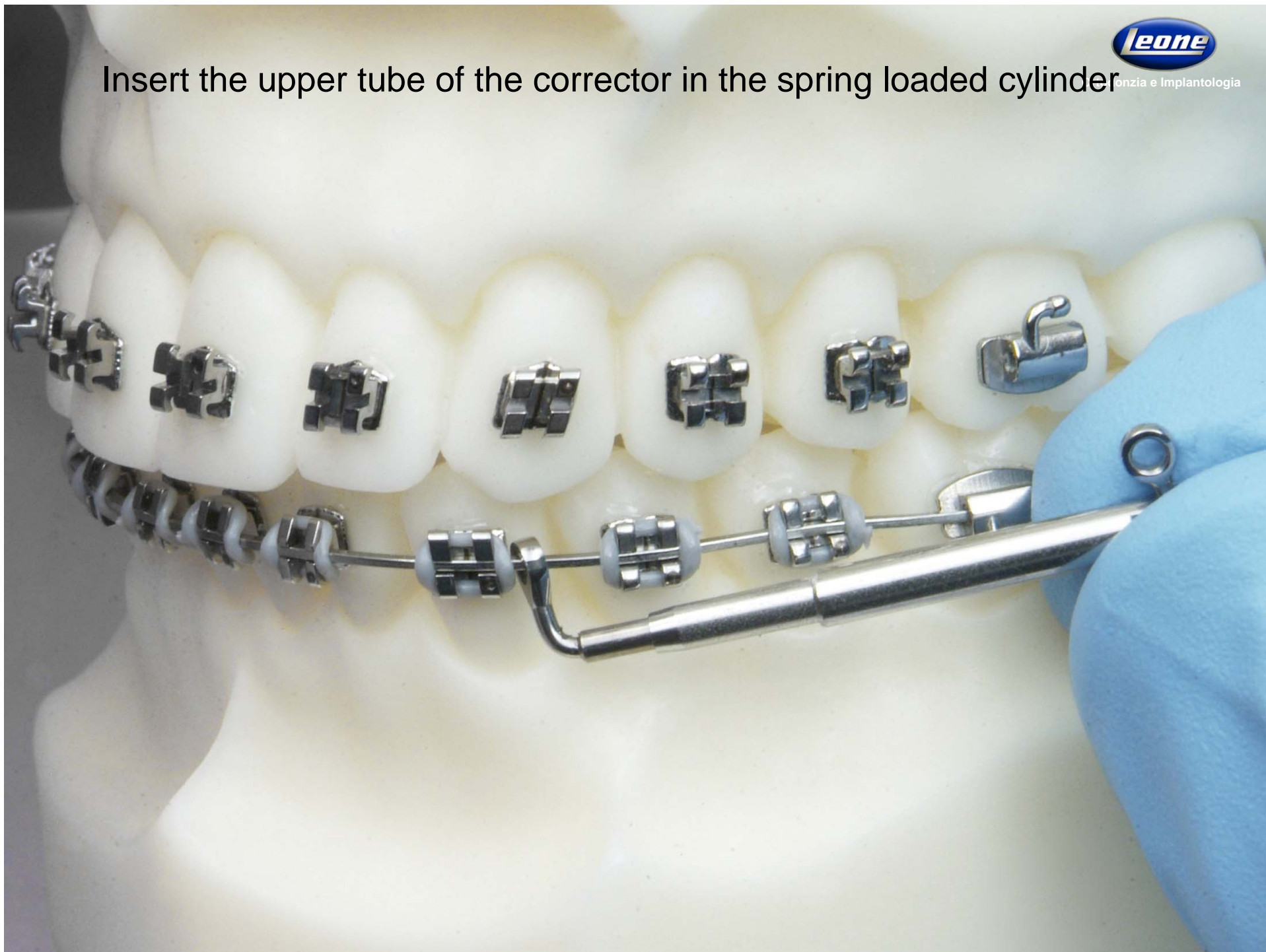
Ortodonzia e Implantologia



Insert the upper tube of the corrector in the spring loaded cylinder



Insert the upper tube of the corrector in the spring loaded cylinder



Insert the upper archwire 0.019 "x0.025" in the  
eyelet of spring loaded cylinder from the mesial  
side



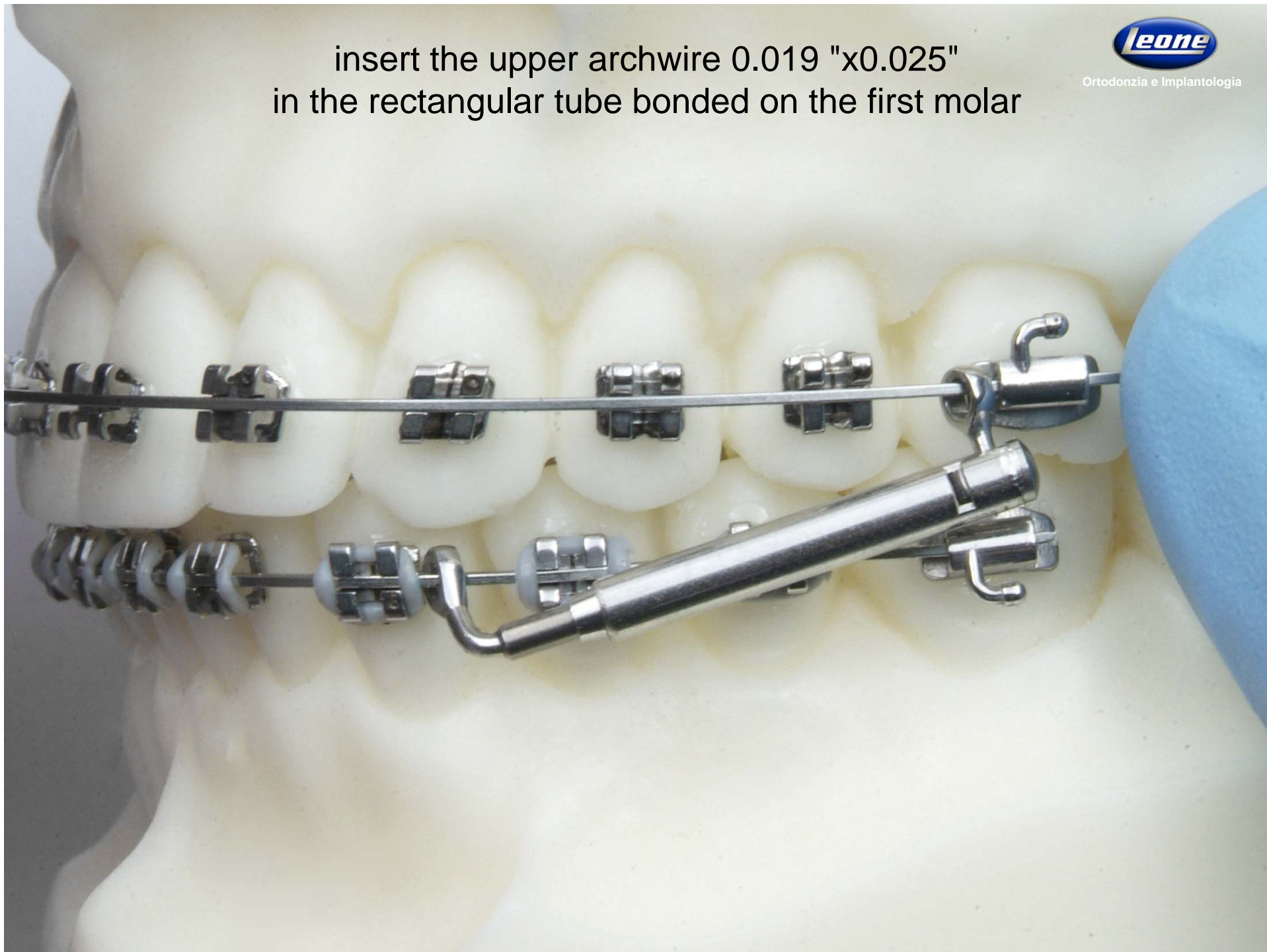
Ortodonzia e Implantologia



insert the upper archwire 0.019 "x0.025"  
in the rectangular tube bonded on the first molar



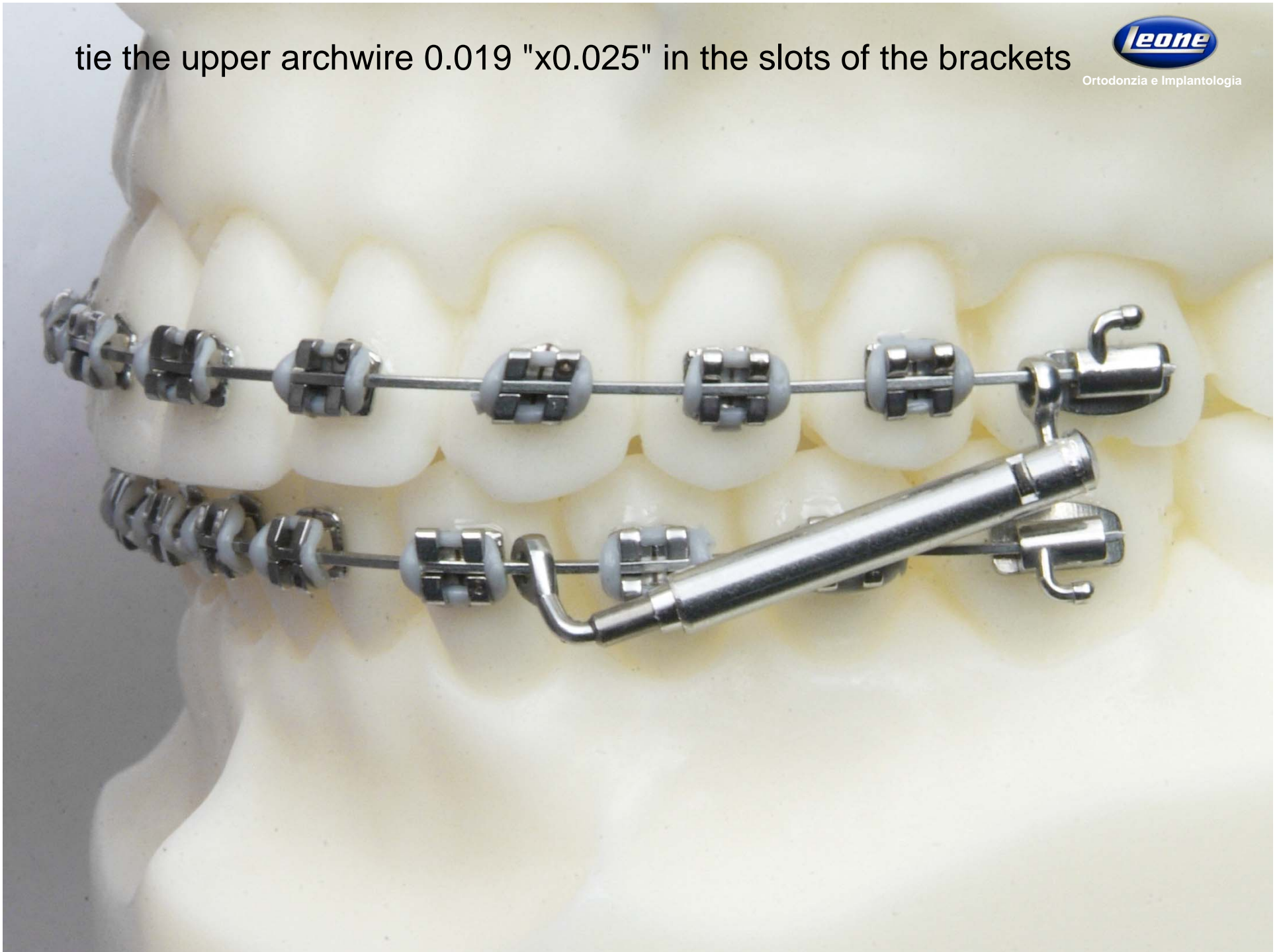
Ortodonzia e Implantologia



tie the upper archwire 0.019 "x0.025" in the slots of the brackets



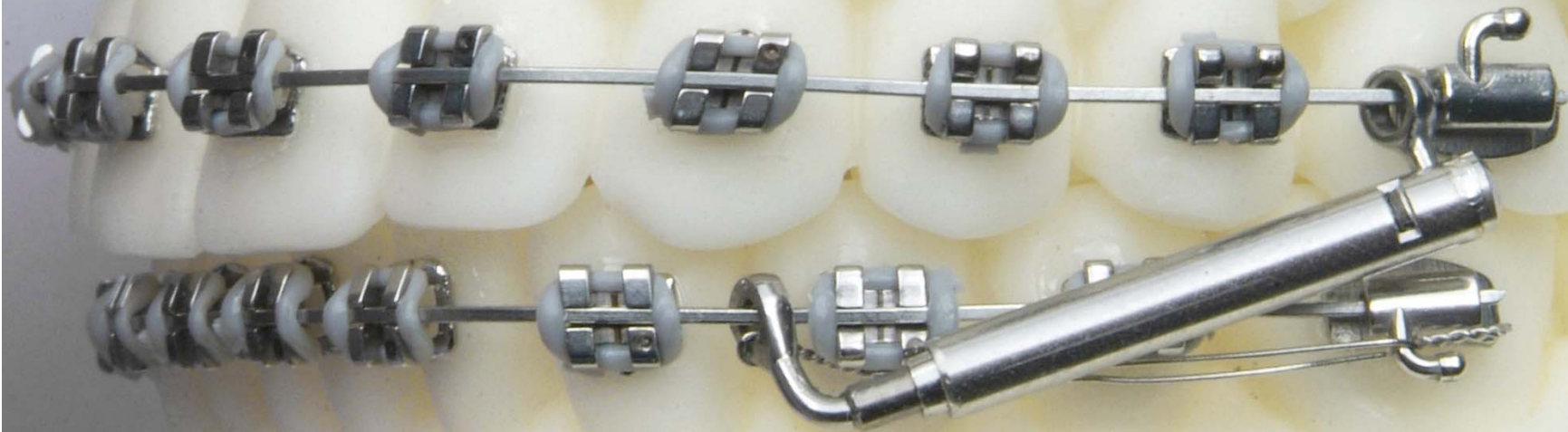
Ortodonzia e Implantologia



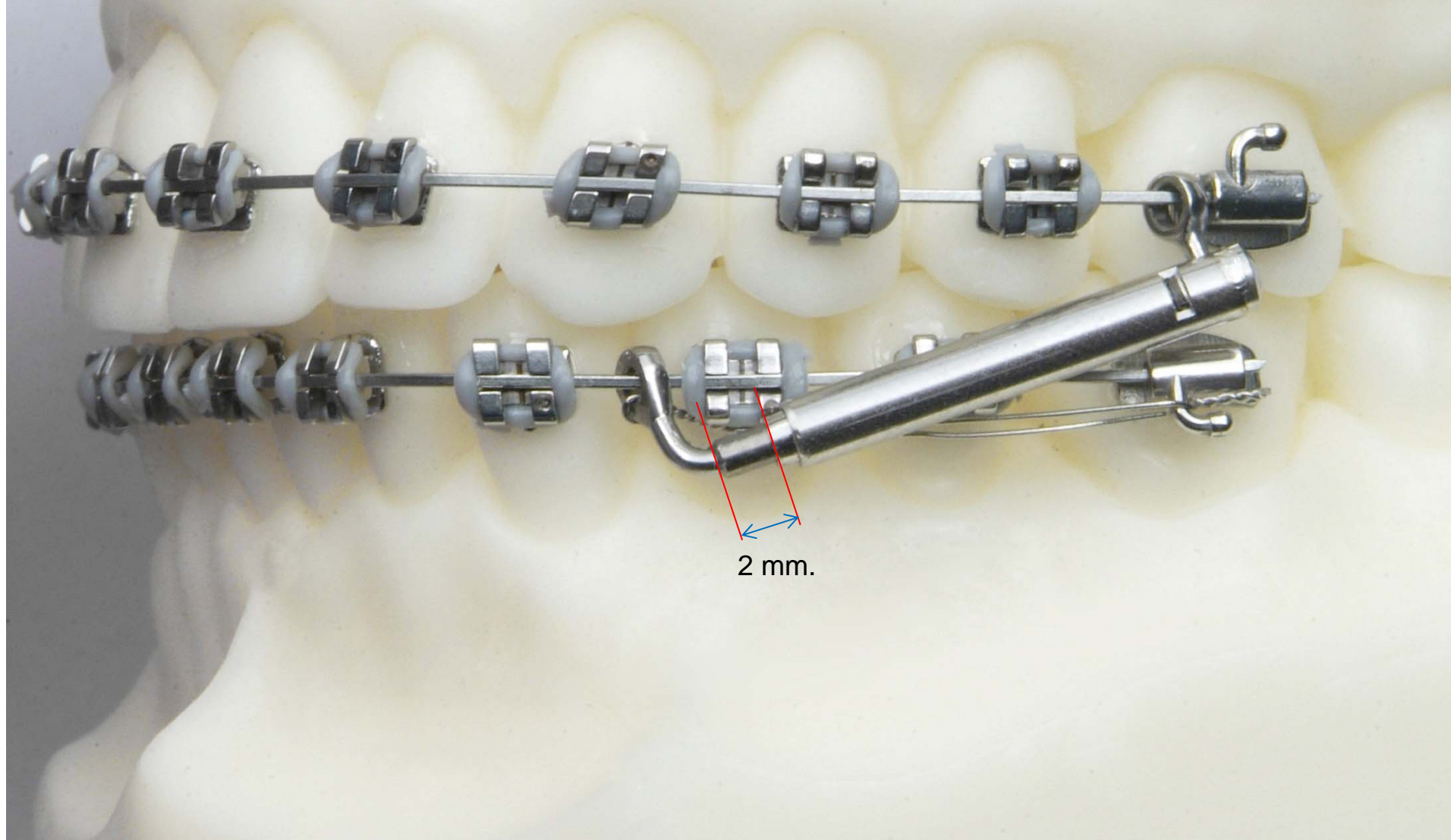
insert and twist a ligature wire in the eyelet of the lower amortized piston and connect the other end to the hook of the tube bonded on the molar



Ortodonzia e Implantologia

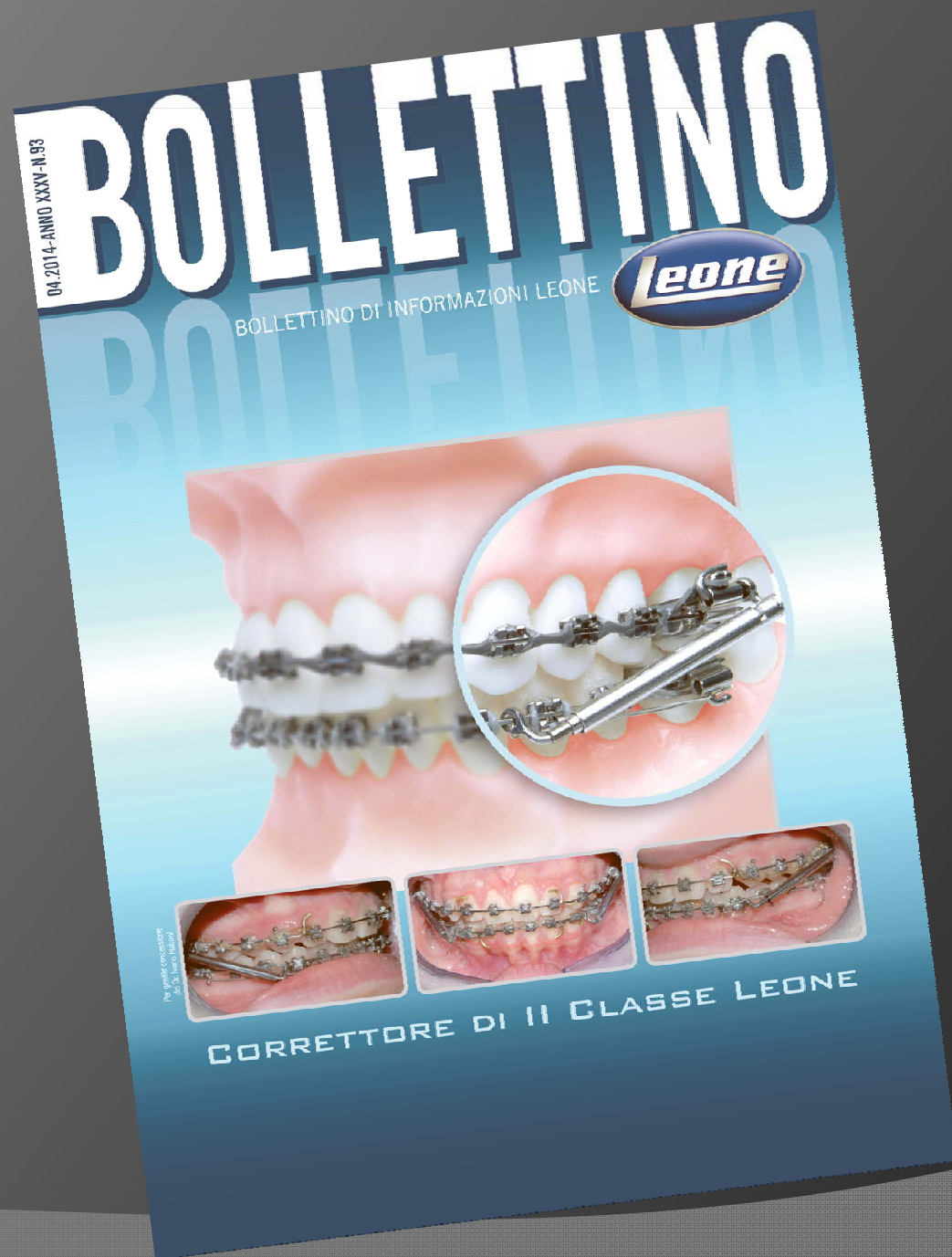


during the application of the lower ligature make sure that in centric occlusion the amortized piston is not completely in compression but escape from its tube of about 2 mm.



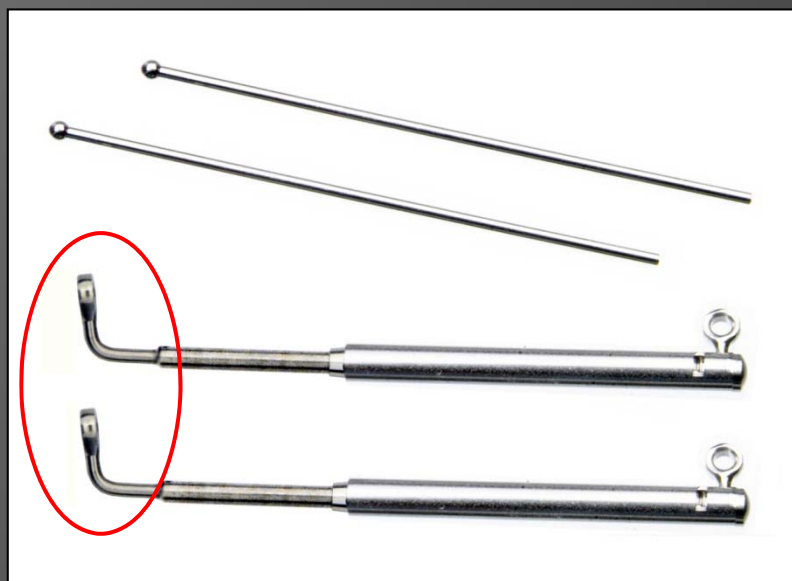


Ortodonzia e Implantologia



# II CLASS corrector ***GOto1***

According to the space available  
select among extra short, short  
and long.



insert the lower arch 0.019 "x0.025" in the eyelets  
of both cylinders amortized



Ortodonzia e Implantologia



insert and tie the lower arch 0.019 "x0.025"  
in the slots placing an eyelet between 33 and 34  
and the other between 43 and 44



Ortodonzia e Implantologia





insert the upper tube of the corrector in the amortized cylinder



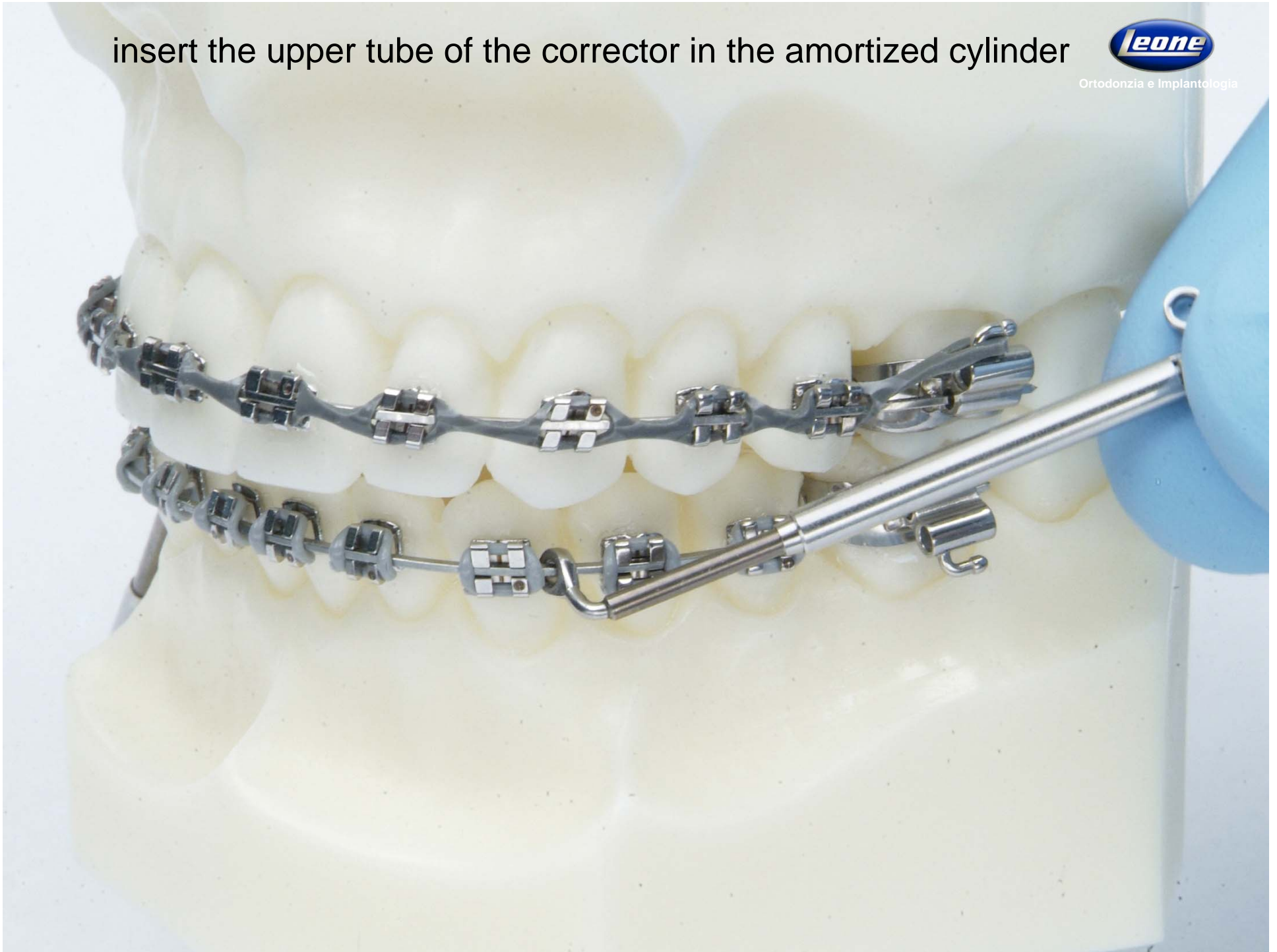
Ortodonzia e Implantologia



insert the upper tube of the corrector in the amortized cylinder



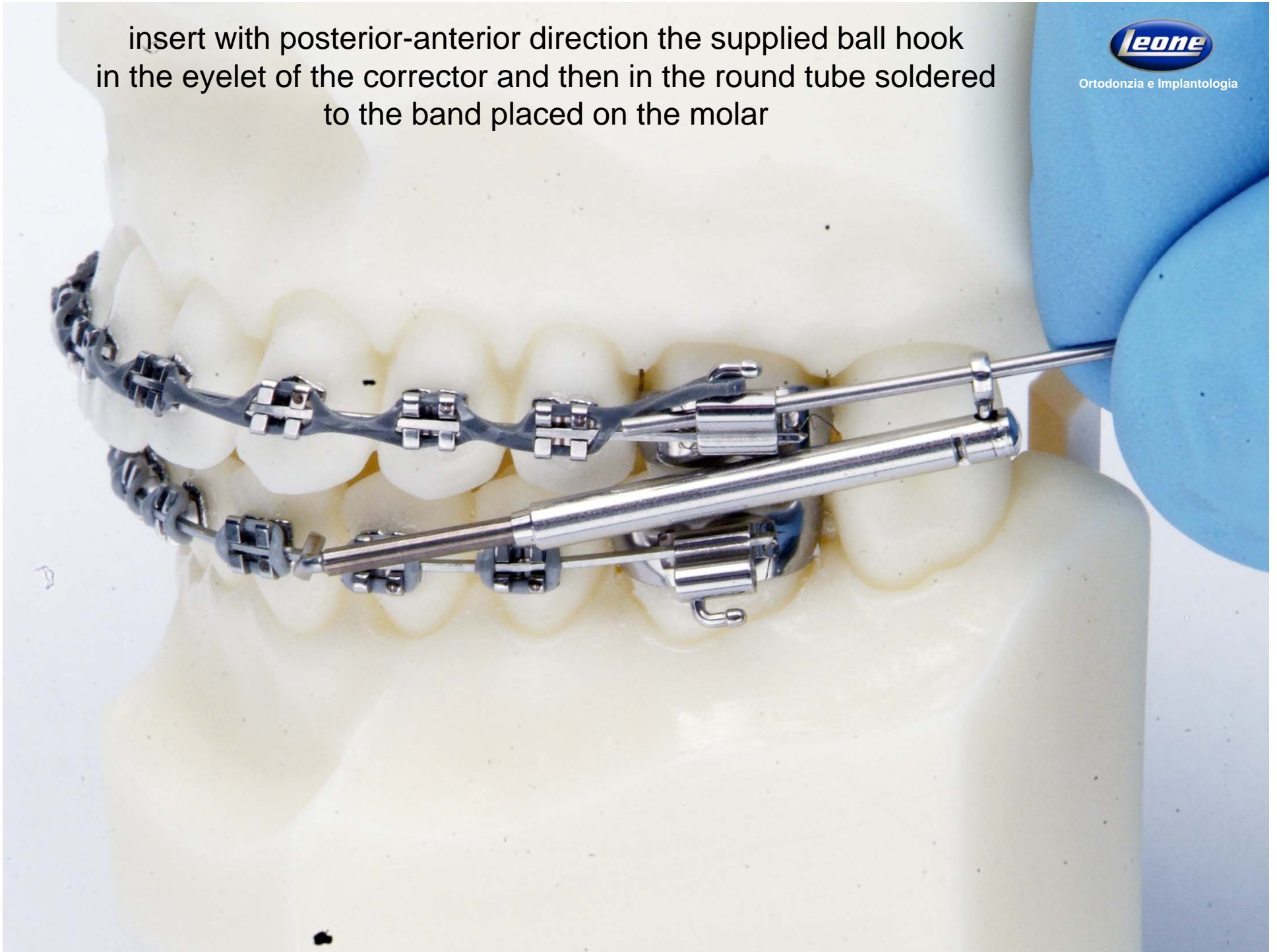
Ortodonzia e Implantologia



insert with posterior-anterior direction the supplied ball hook  
in the eyelet of the corrector and then in the round tube soldered  
to the band placed on the molar



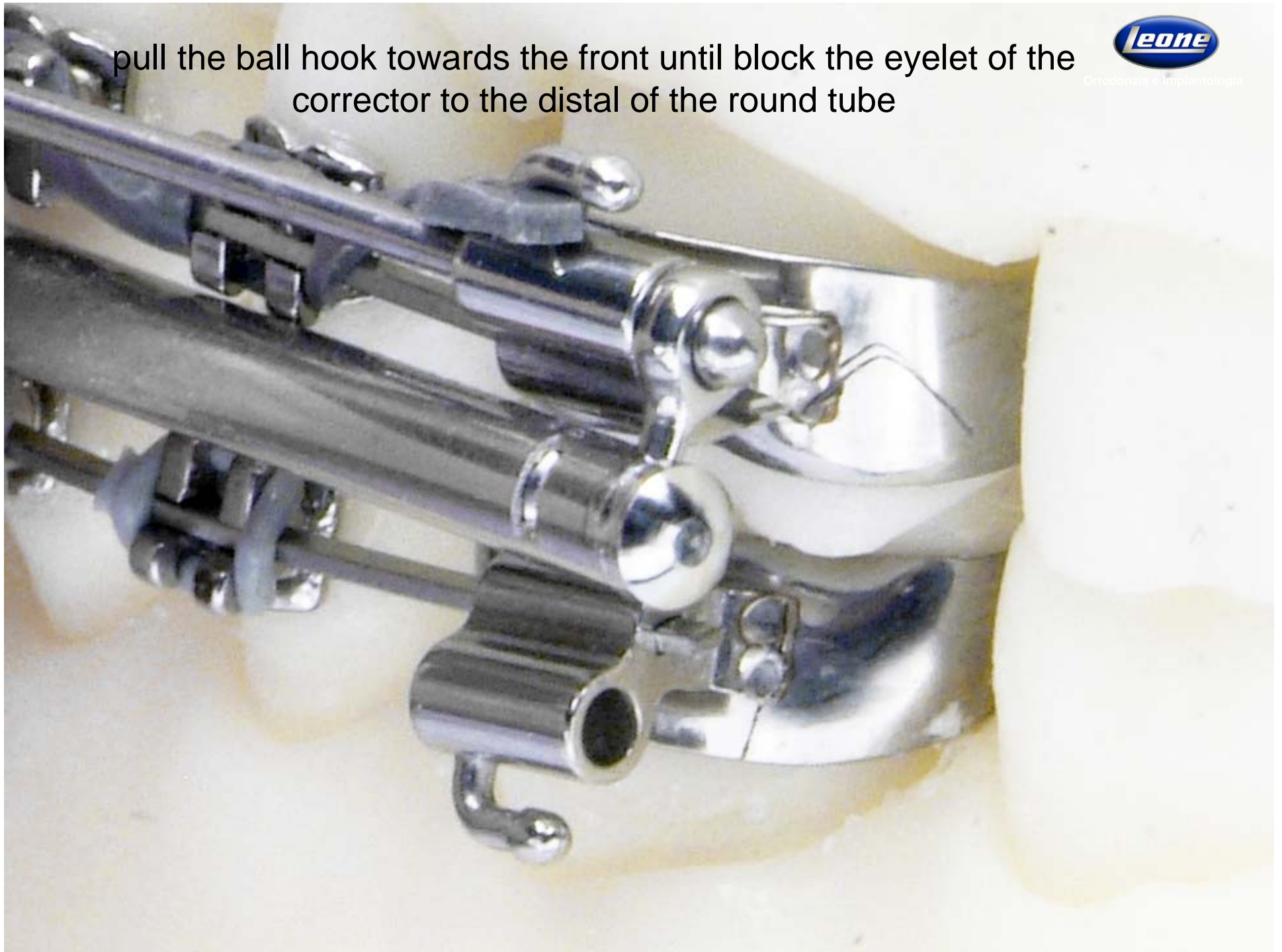
Ortodonzia e Implantologia



pull the ball hook towards the front until block the eyelet of the corrector to the distal of the round tube



Ortodonzia e Implantologia



turn the wire of the ball hook toward the distal  
to anchor the corrector to the molar tube



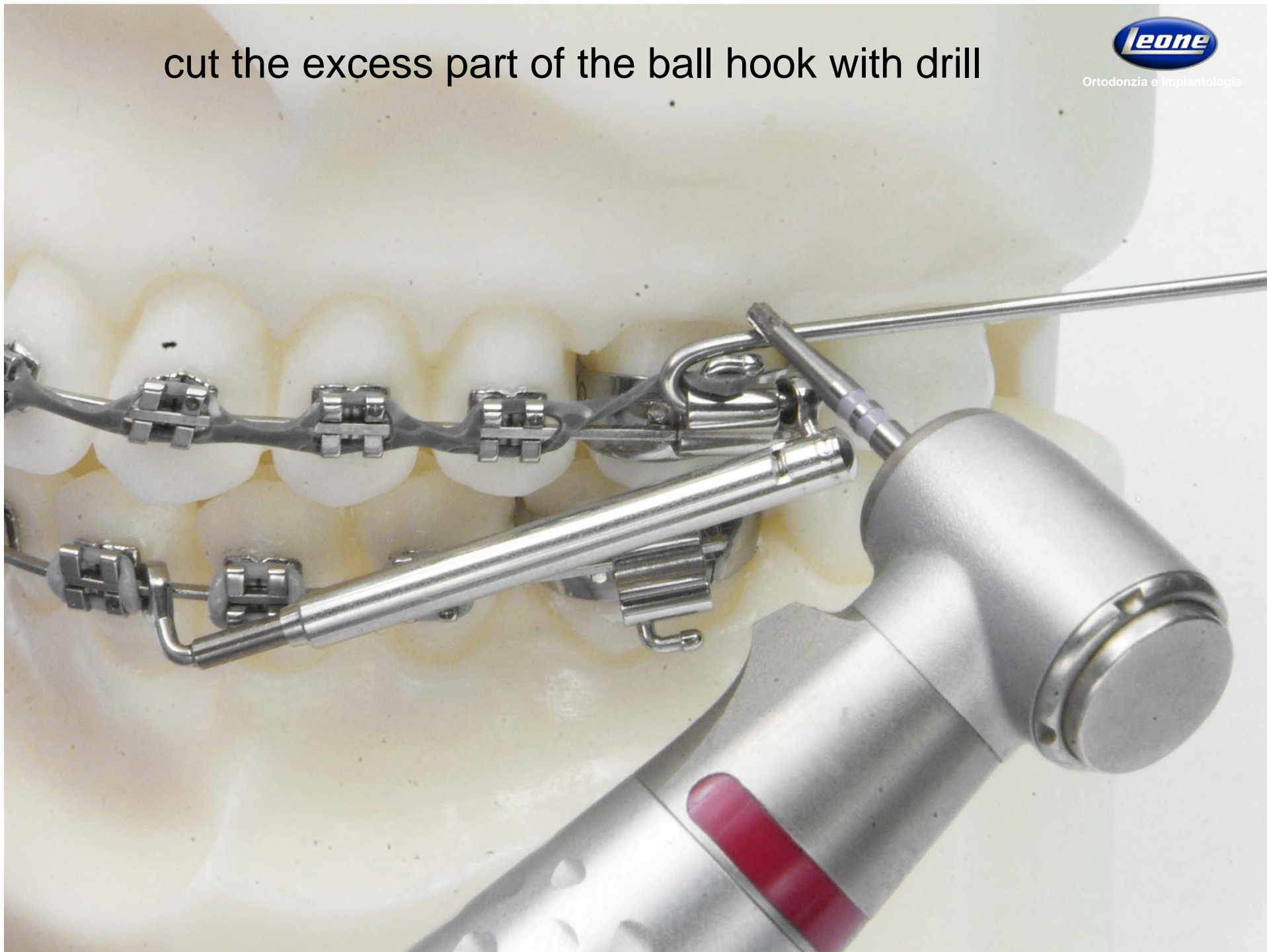
Ortodonzia e Implantologia

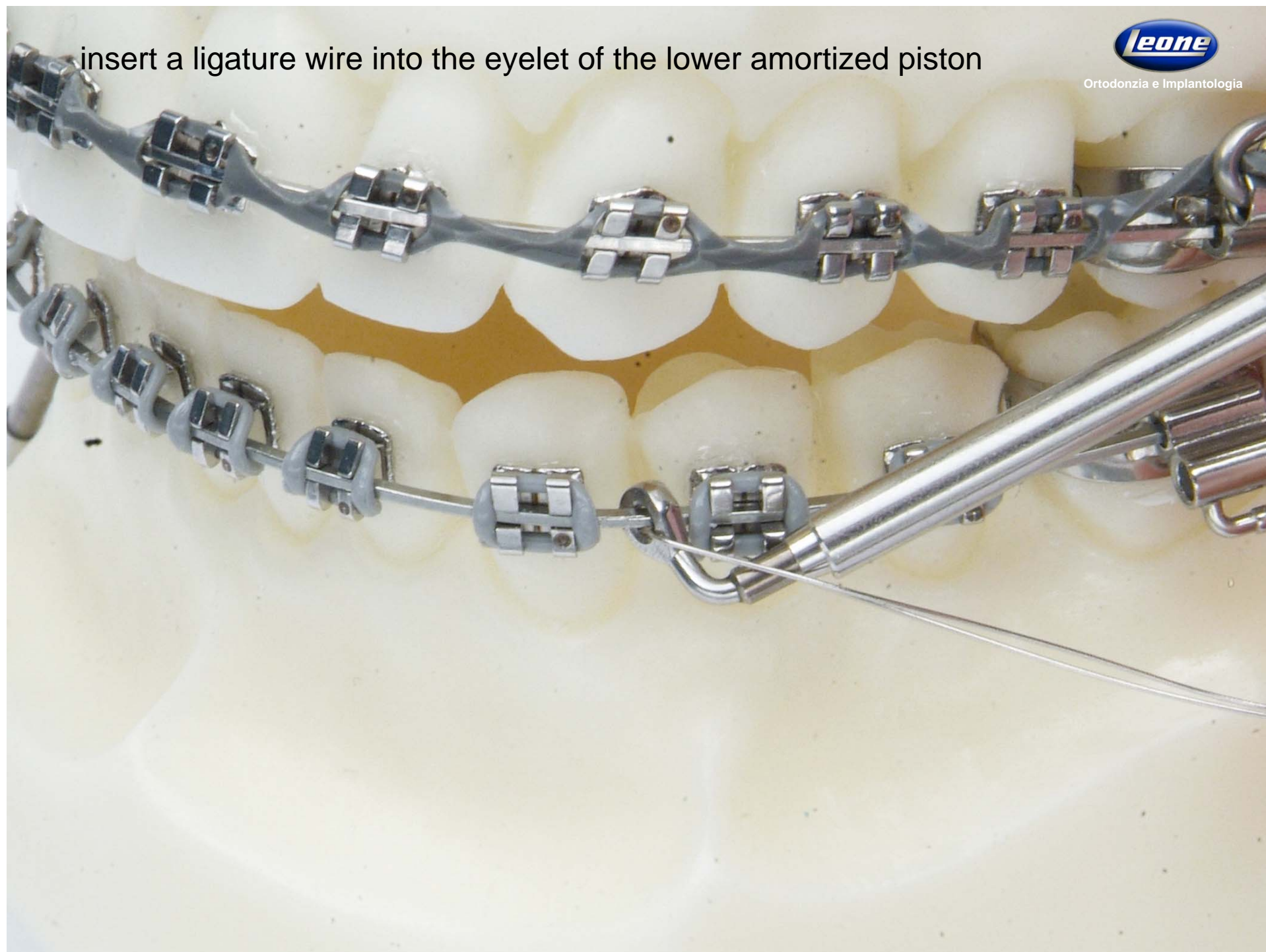


cut the excess part of the ball hook with drill



Ortodonzia e Implantologia



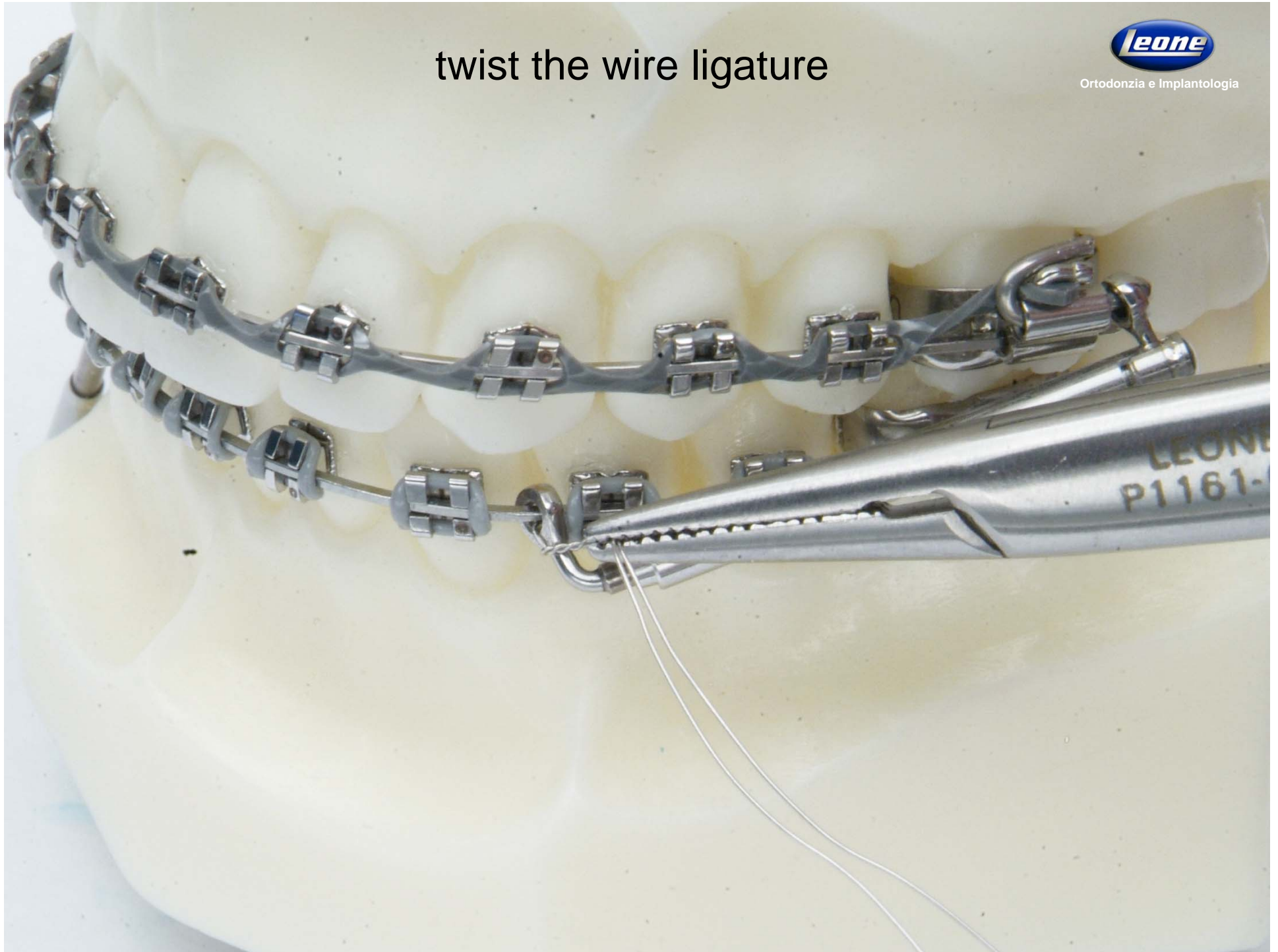


insert a ligature wire into the eyelet of the lower amortized piston

twist the wire ligature



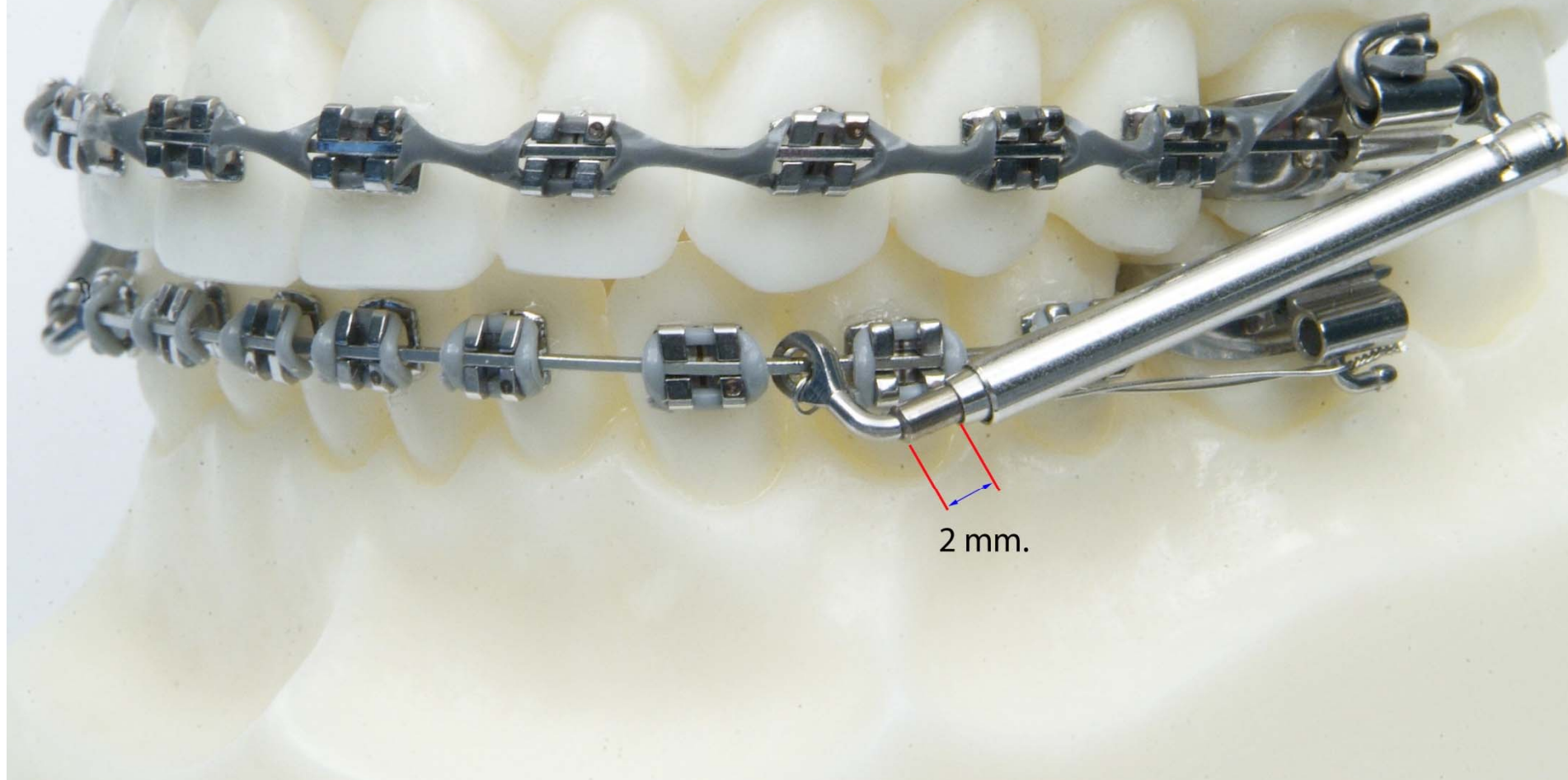
Ortodonzia e Implantologia



twist the ligature wire to the eyelet of the lower piston directing the other end to the hook of the welded tube on the band and tie it at the same



during the application of the lower ligature make sure that in centric occlusion the amortized piston is not completely in compression but escape from its tube of about 2 mm.

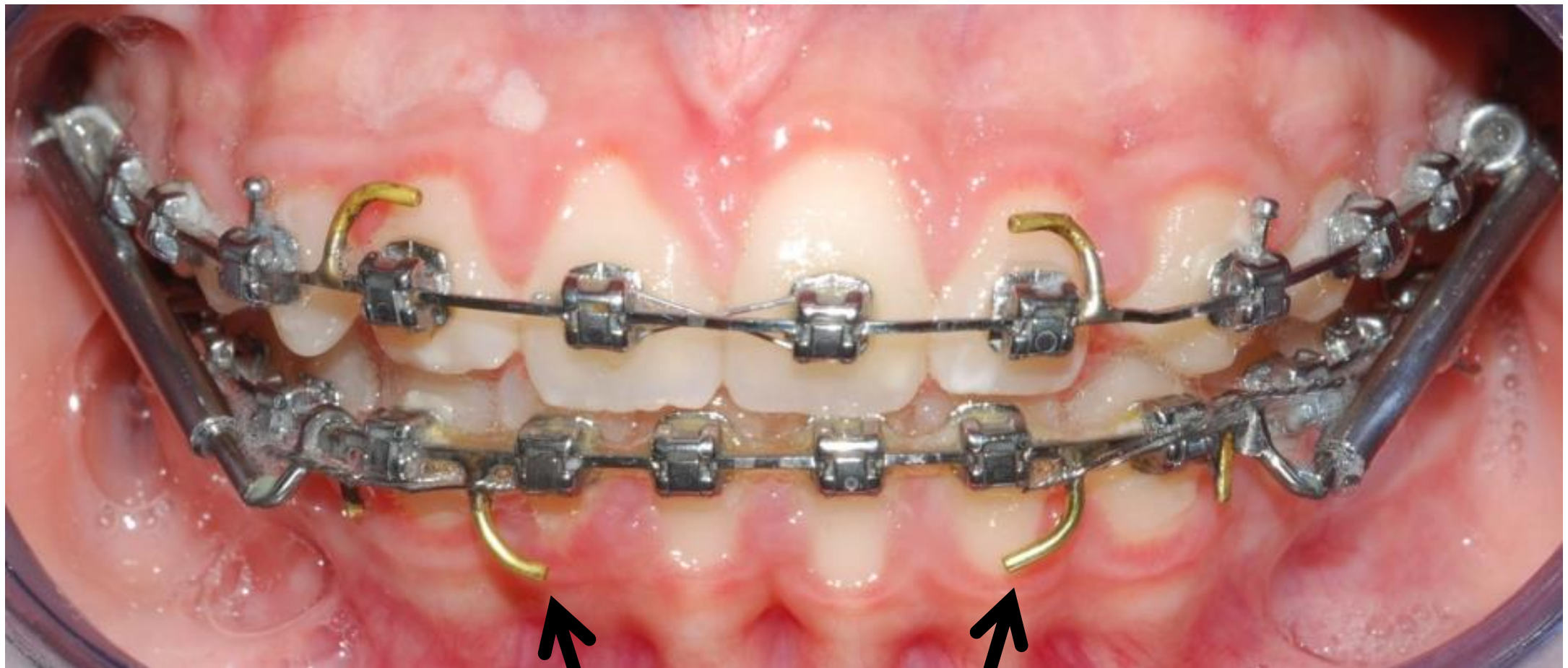


corrector applied

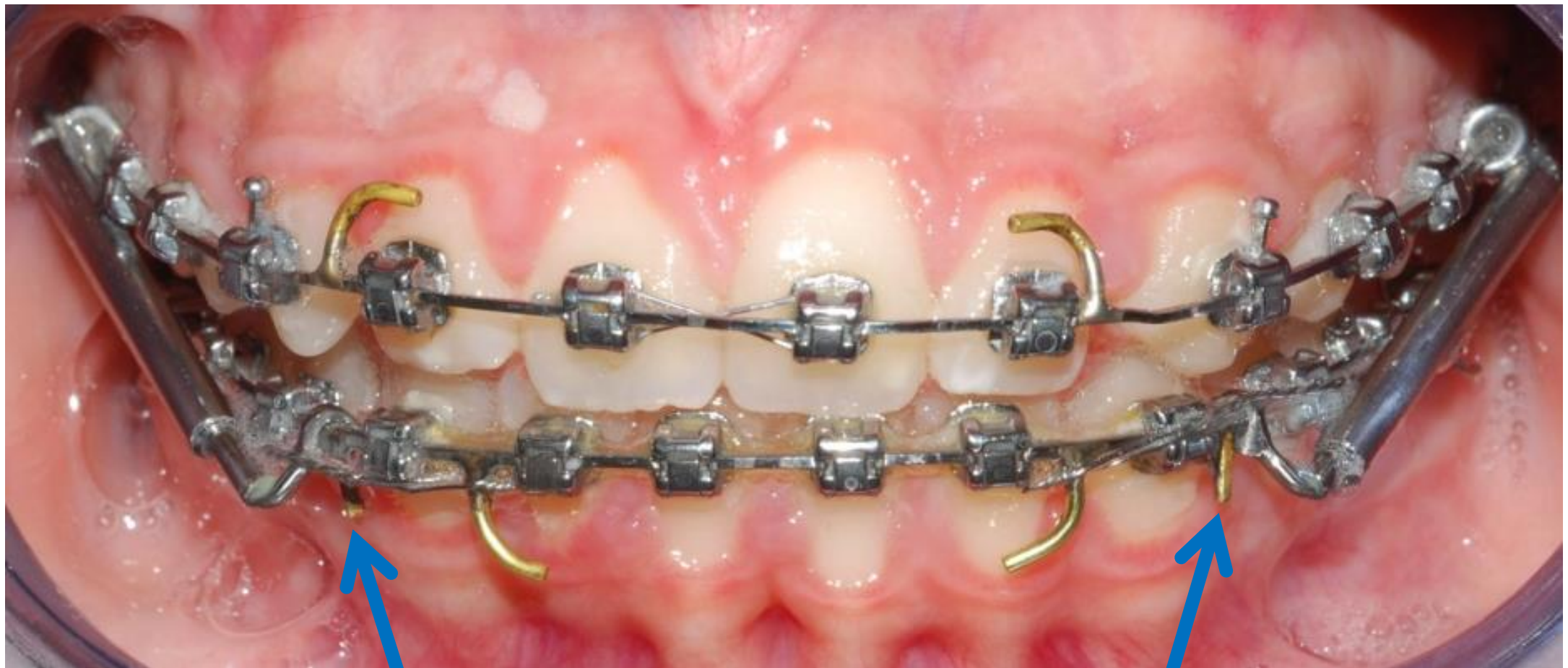


Ortodonzia e Implantologia

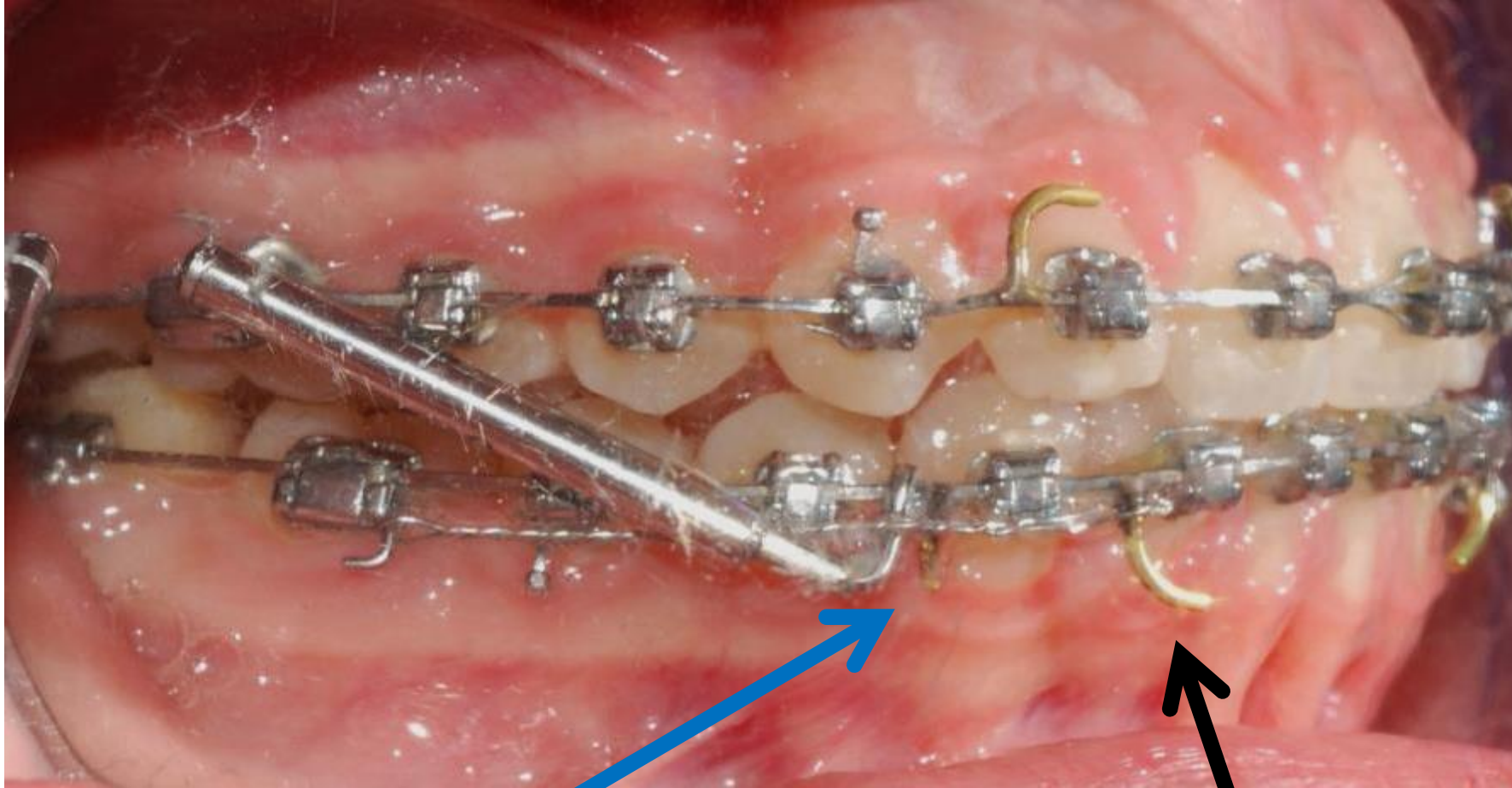




**Post placed between lower lateral and cuspid are suitable for the laceback to the molars hooks.  
The laceback run over the corrector to limit its proinclination towards the vestibular**



**Post placed between lower cuspid and bicuspid to act as stop for the eyelets**



**Post placed between lower cuspid and bicuspid to act as stop for the eyelets**

**Post placed between lower lateral and cuspid are suitable for the laceback to the molars hooks.  
The laceback run over the corrector to limit its proinclination towards the vestibular**